

MANUAL FOR STROCO PURE ELECTRIC HEATER 22,5 kW



stroco
MOBILE HEATING SOLUTIONS

STROCO ApS, Energivej 3, DK-6800 Varde, tel. +45 86961066



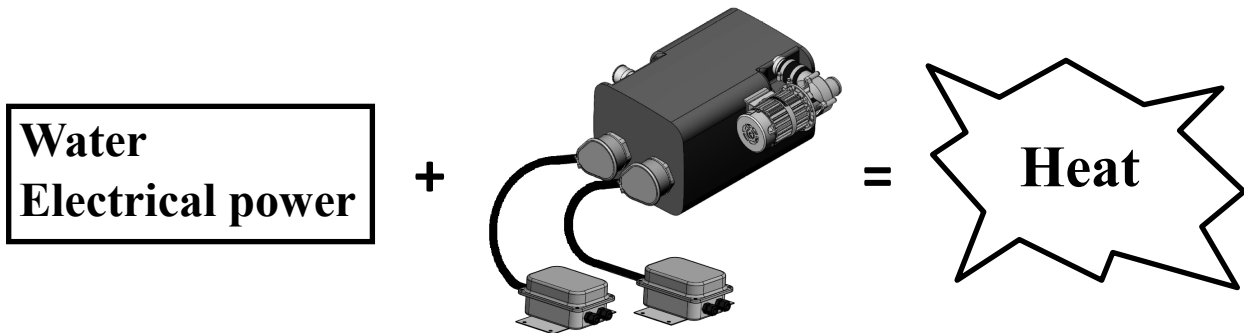
In order to maintain warranty and warranty rights, the following must at least be met.

- 1. Installation is performed as described in this manual.**
- 2. Service and repair work must be carried out professionally correctly.**
- 3. Only original spare parts shall be used.**
- 4. The heater may only be used for the voltage shown on the type plate.**

	Page:
Description.....	4
Built-in dimentions.....	5
Marking STROCO Electric heater.....	6
Electrical installation and settings.....	7
Coupling scheme.....	8-9
Warranty conditions.....	10
Dealers.....	11

DESCRIPTION

In order to ensure optimal use of the STROCO Electric heater and ensure maximum safety, it is important that this manual is read and understood before using the heater.
Please remember to complete warranty card at www.stroco.dk.



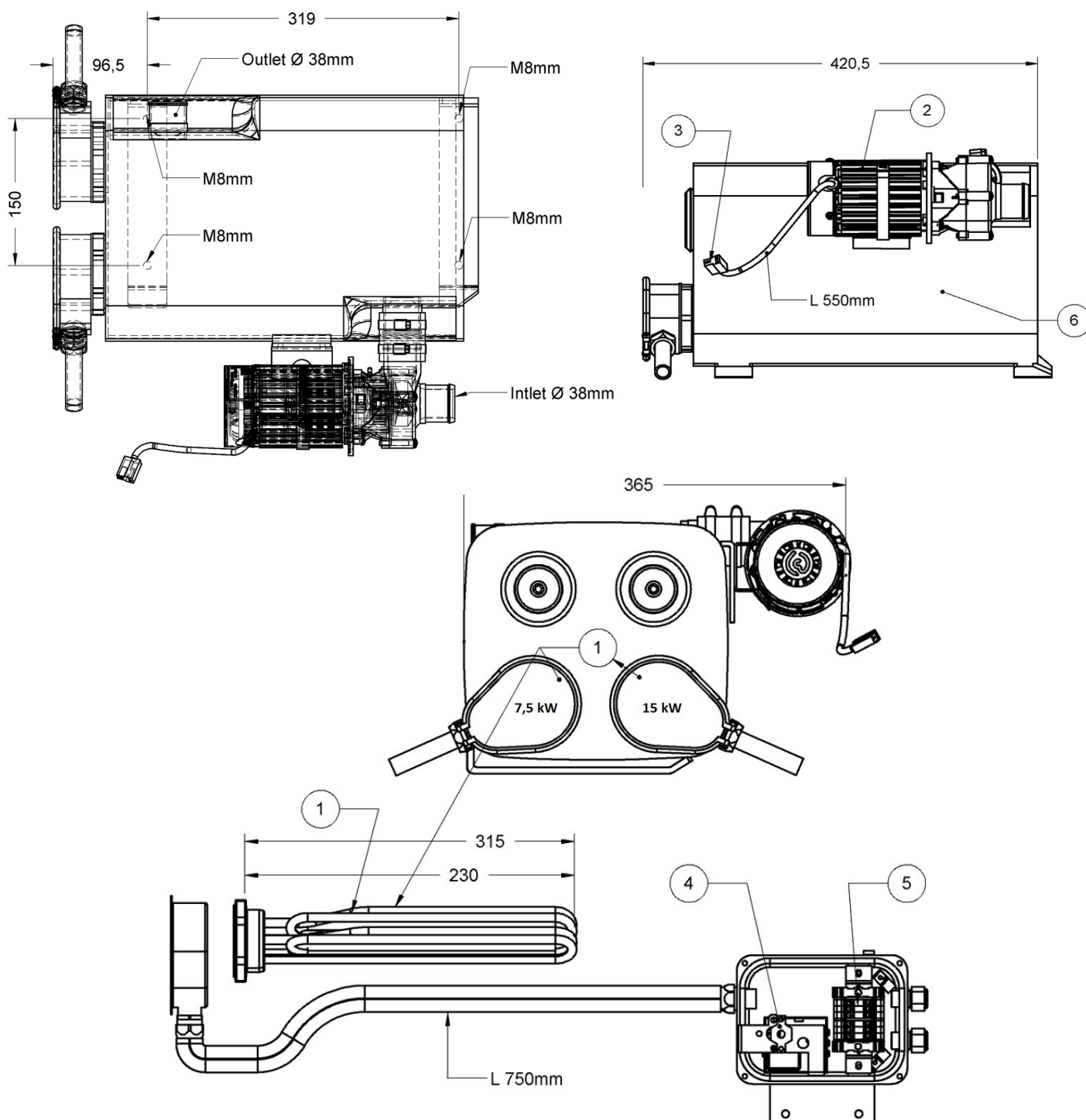
The Stroco Electrical heater is used to heat the vehicle during parking and day to day travel on hybrid or all-electric vehicles. STROCO Electrical heater is mounted in the vehicle's existing heating system and can heat the driver's area, passenger space and engine. STROCO Electrical heater has built-in heating elements operating thermostat and safety thermostat. The type designation 7,5 kW and 15 kW indicates the power size of the heating elements in kW. The electrical connection to the electrical elements is made via a HVDC contactor (not supplied by Stroco) to the heating elements. The HVDC contactor is controlled via the electrical mechanical contactor inside the connection box which receives an active 24VDC signal from the vehicle's heat control system to pull the HVDC contactor. When the temperature is reached, the mechanical contactor breaks the 24 voltage to the HVDC contactor. For circulation of the water, the 24V DC water pump is located on the heater and needs a 10 Amp secured cable connected to the heating control system.

Technical specifications

Type:	STROCO Electric heater
Heating output EL:	7,5 kW + 15 kW total 22,5 kW
Electrical connection :	Terminal block via cable gland
Operating thermostat :	Adjustable 37-85°C
Safety thermostat :	110°C reconnected by push button
Dimensions L x W x H:	420,5 x 365 x 234mm
Weight:	23 kg cpl.
Circulation pump :	6000 l/t at 0,4 bar. Power consumption : 6,6A at 24V DC
Operating voltage EL :	672V DC (Max. 10% overvoltage)
MAX. AMBIENT TEMPERATURE:	80°C

ESSENTIAL! THE HEATING SYSTEM MUST BE FILLED WITH A CORROSION-RETARDANT ADDITIVE (E.G. 40-60% ANTIFREEZE) .

BUILT-IN DIMENSIONS FOR 7,5 kW AND 15 kW 672V DC





Pos.	Description	Part number
1	Heating element 7,5 kW 672V DC - 230mm	11.927-1
1	Heating element 15 kW 672V DC - 315mm	11.936-1
2	VP 6000 L/h 24V DC 7A 0,4 bar	35.470
3	Multi 2pole pin plug sleeves 6,3mm	13.561
4	Thermostat EGO 37-85°C/110°	11.926
5	Terminal Block	11.915
6	Boiler Std. (Grey)	35.544
6	Boiler (Color RAL 5015 "Blue")	35.544-10

MARKING STROCO ELECTRIC HEATER

Label on connection box

strocco
MOBILE HEATING SOLUTIONS

ingeniør & handelsfirma
DK 8450 HAMMEL.
TLF. + 45 – 86961066



V	672 DC	W	7500
Hz		TYPE	7,5 EL
IP			KLI
Vare	Bus motorvarmer		

VARNING !
(S) Elanslutningen måste
kopplas bort, innan du öppnar
åtkomst till kontaktplinten

WARNING !
(GB) All lines must be
disconnected before opening
for access to the terminals.

strocco
MOBILE HEATING SOLUTIONS

ingeniør & handelsfirma
DK 8450 HAMMEL.
TLF. + 45 – 86961066

V	672 DC	W	15000
Hz		TYPE	15 EL
IP			KLI
Vare	Bus motorvarmer		

VARNING !
(S) Elanslutningen måste
kopplas bort, innan du öppnar
åtkomst till kontaktplinten

WARNING !
(GB) All lines must be
disconnected before opening
for access to the terminals.

ELECTRICAL INSTALLATION AND SETTING

The electrical installation is described below and refers to diagrams on the next page.

1 Ground connections

Ground Connections may only be performed, as shown in the diagram on the next page. Ground connections between individual parts must not be conducted outside the armoured hoses. The connecting box connects to the vehicle chassis. The vehicle chassis cleans from paint and rust prevented thoroughly. A minimum Ø3.5 mm even cutting or threading screw fitted with a tooth disc may be used.

2 Thermostat

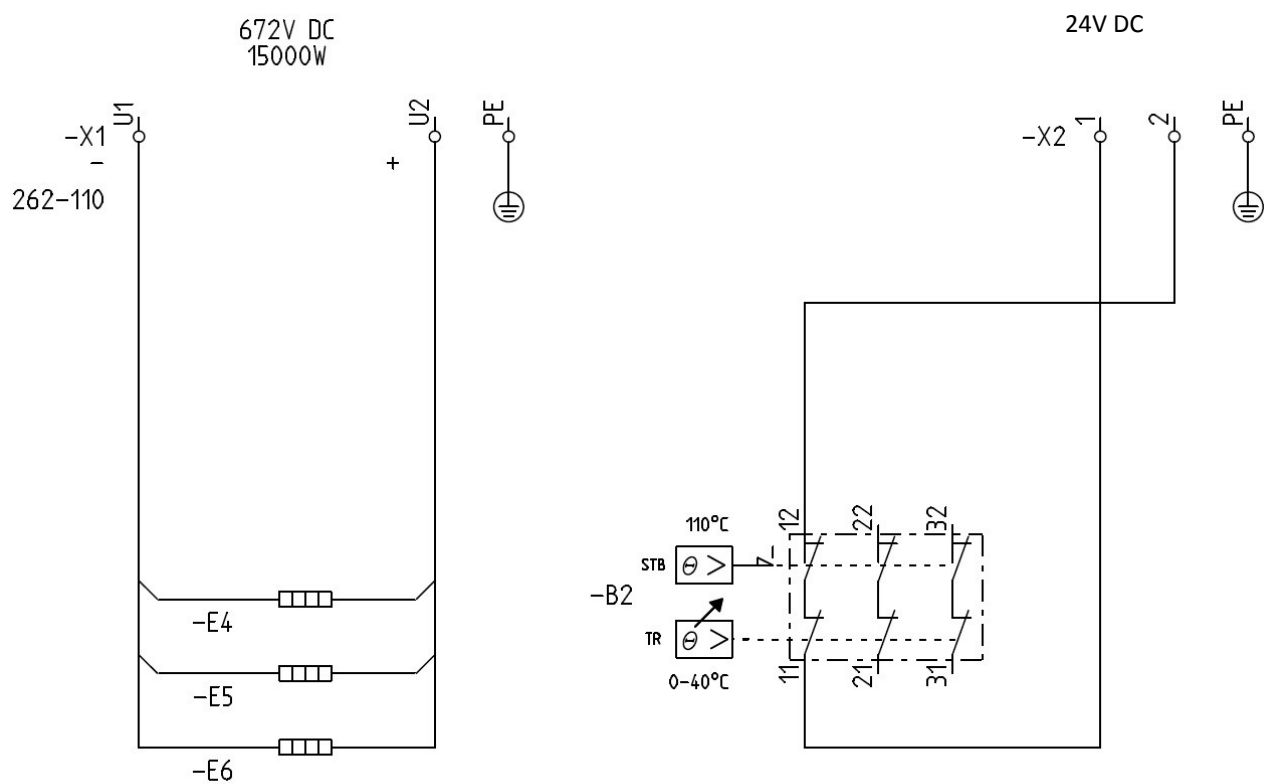
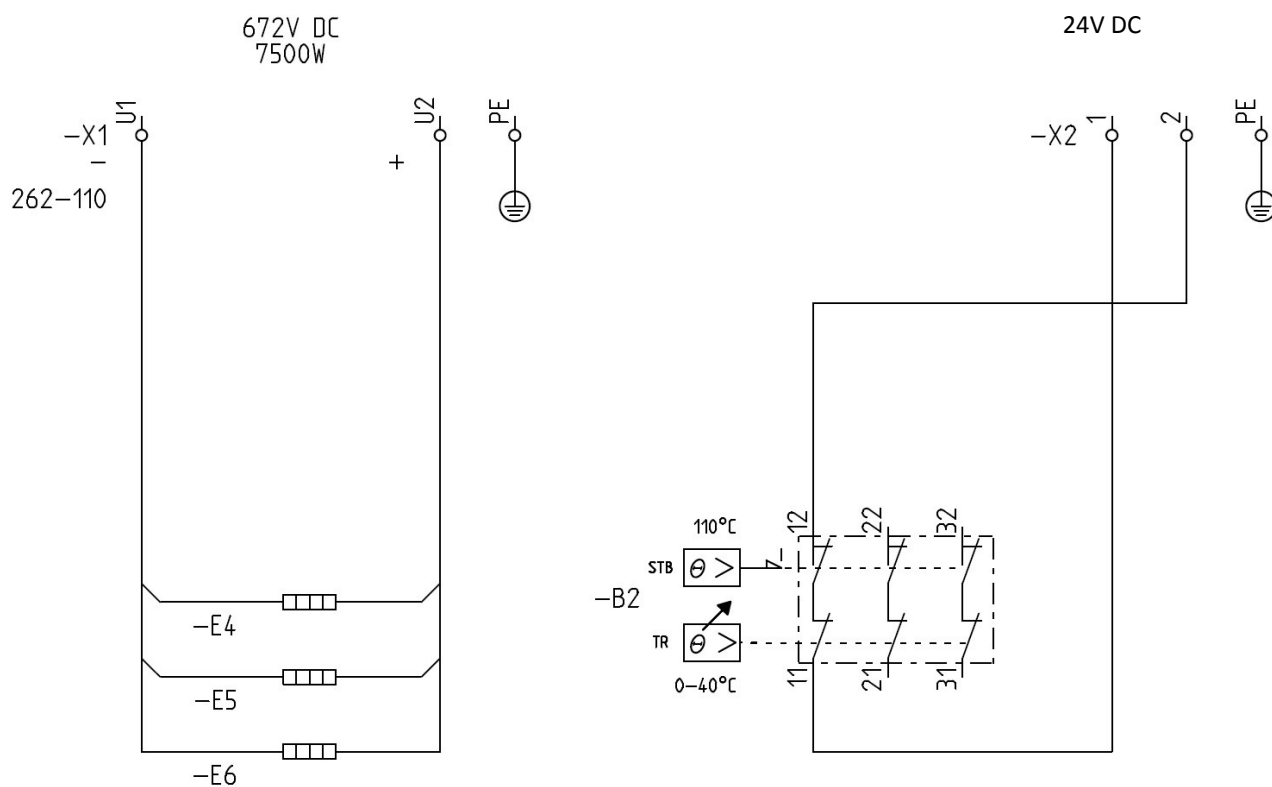
Operating thermostat can be set steplessly from 37°C to 85°C. The thermostat has a built-in hysteresis of 12 K, i.e. there is 12°C between the connecting and disconnecting. The operating temperature is set with a screwdriver at . The safety thermostat disconnects if the temperature exceeds 110°C. The thermostat can be reconnected by pressing the red button.

Note ! The setting and reconnection of thermostats must only be carried out with disconnected main Switch of the vehicle.

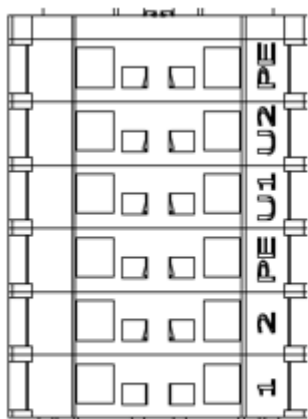
3 Level sensor for low water level of heating circuit.

Level sensor shall be used to block activation of heating elements when water level is low to prevent damage on the heating elements. (Not supplied by Stroco).

COUPLING SCHEME FOR 7,5 kW AND 15 kW 672V DC



COUPLING SCHEME FOR 7,5 kW AND 15 kW 672V DC



PE= Ground

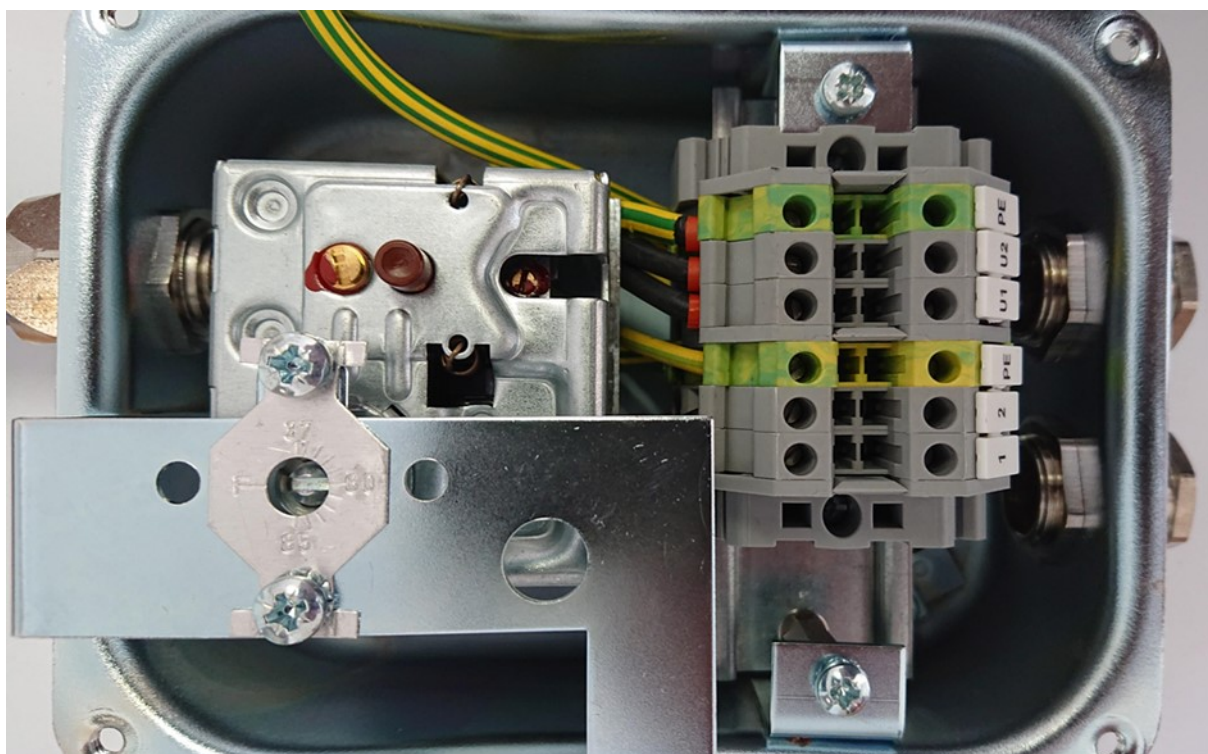
U2= HV + 672VDC from HVDC contactor (not supplied by Stroco).

U1= HV - 672VDC from HVDC contactor (not supplied by Stroco).

PE= Ground

2= Outgoing 24VDC to HVDC contactor (not supplied by Stroco).

1= incoming 24VDC from vehicle heating system or I/O module
when heat is demanded (not supplied by Stroco).



WARRANTY CONDITIONS FOR STROCO HEATERS

STROCO heaters and parts are covered by 24 months warranty. The warranty is valid from the date of installation, however, no more than 36 months from the date of delivery.

However, the warranty only applies if the guidelines are followed:

- The STROCO heater is properly mounted according to manual
- Warranty card correctly completed with serial number at www.stroco.dk

The warranty covers manufacturing defects and material defects.

THE WARRANTY LAPSE IF:

- Changes that have been made to the system or the system is NOT built in accordance with our instructions

During the warranty period, STROCO is obligated to repair units or parts that we determine to be defective. Repairs for complaints must be made in an authorized service workshop or at one of our partners' workshops.

Labour costs for any complaints on heaters or parts are not covered by STROCO:

If you observe defects in the system during the warranty period, the defective parts should be sent postage paid to STROCO with information about the defect and delivery date/heater no.

STROCO's assessment of the defect, and whether it is covered by the warranty, will always be final and binding for the customer.

STROCO will only accept warranty claims that have been approved beforehand. STROCO can only accept warranty claims if the owner/user can present written documentation to show that all service and safety instructions have been followed. All warranties will be void if the installation guide and other instructions in this manual have not been followed. The same applies if installation and maintenance has not been performed in a proper professional manner, or if unoriginal parts have been used for servicing or repairs.

Consequential losses:

STROCO assumes no liability for personal injury, damage to property, or operating losses resulting from failure of the unit, no matter the cause (including manufacturing defects).

**DANMARK, Denmark:**

STROCO ApS
Energivej 3
DK-6800 Varde

Tel. +45 86 96 10 66
E-mail
info@stroco.dk

ENGLAND:

GRAYSON THERMAL SYSTEMS
257 Wharfdale Road
Tyseley
GB-Birmingham B11 2DP

Tel. +44 121 700 5600
E-mail
info@graysonts.com

FINLAND:

EL-CAR OY Tel. +358 09 389 4995
Jukka Eerola E-mail
Mittatie 26A info@el-car.fi
SF-01260 Vantaa

MUICON OY Tel. +358 44 213 4131
Marko Muikko E-mail
Hakekatu 4 marko.muikku@muicon.fi
SF-70800 Kuopio

FÆRØERNE, the Faroe Islands:

CARE ON SEA Spf
Úti vío Neyst 11
FO-430 Hvalvík

Tel. +298 74 88 55
E-mail
careonseas@gmail.com

NORGE, Norway:

VEST SERVICE AS
Visnesvegen 9A
N-6783 Stryn

Tel. +47 90 85 60 00
E-mail
post@vest.no

POLEN, Poland:

MULTITECH sp. z o.o.
Spicerowa 49
PL-32-070 Dabrowa Szlachecka

Tel. +48 12 638 06 63
E-mail
biuro@multitech.krakow.pl

PORTUGAL:

PROJECTIVA
Zona Industrial
Apartado 175
P-2354-909 Torres Novas

Tel. +351 249 819 240
E-mail
geral@projectiva.pt

SVERIGE, Sweden:

TK BUSSKLIMAT AB
Järnringen 2
S-433 30 Partille

Tel. +46 31 445 200
E-mail
info@tkbussklimat.se

ØSTRIG, Austria:

FA. ING. HUBERT KNITTEL
Lastbergstrasse 41
A-3031 Pressbaum

Tel. +43 1 804 15 23-0
E-mail
h.knittel@josefzimmer.at